

Duct Silencers

reduce airborne noise created by fans

Built to take the rigorous punishment of heavy industry, these silencers shut out high frequency and low frequency airborne noise created by axial and centrifugal fans.



**Silencer Attenuation (Insertion Loss)
Roof Silencer (RS)**

Fan Size	Octave Band (C/S)					
	125	250	500	1000	2000	4000
12	-0	-2	-4	-8	-10	-8
16	-1	-3	-5	-9	-9	-7
20	-1	-4	-6	-12	-9	-7
24	-2	-4	-8	-10	-8	-6
27	-3	-5	-9	-10	-8	-6
30	-3	-6	-9	-10	-9	-6
36	-4	-7	-10	-9	-6	-4
42	-5	-8	-12	-9	-6	-4
48	-5	-8	-10	-8	-6	-4
54	-5	-8	-10	-7	-5	-4
60	-6	-9	-9	-7	-6	-3

**Silencer Attenuation (Insertion Loss)
Sleeve Type In-Line Silencer (SO)**

Fan Size	Octave Band (C/S)					
	125	250	500	1000	2000	4000
12	-0	-2	-5	-10	-12	-10
16	-1	-3	-6	-11	-11	-9
20	-1	-4	-8	-12	-11	-8
24	-2	-5	-10	-12	-10	-7
27	-2	-5	-10	-11	-10	-7
30	-3	-6	-11	-11	-9	-6
36	-4	-8	-12	-11	-8	-5
42	-4	-9	-12	-10	-7	-5
48	-5	-10	-12	-10	-7	-4
54	-5	-10	-11	-9	-6	-3
60	-0	-11	-11	-9	-6	-3

**Silencer Attenuation (Insertion Loss)
Pod Type Silencer (SPS)**

Fan Size	Octave Band (C/S)					
	125	250	500	1000	2000	4000
12	-4	-4	-10	-17	-23	-25
16	-3	-6	-12	-19	-25	-22
20	-3	-8	-15	-21	-26	-20
24	-4	-10	-17	-23	-25	-18
27	-5	-11	-18	-24	-23	-17
30	-6	-12	-19	-25	-22	-16
36	-8	-15	-21	-26	-20	-15
42	-9	-16	-22	-25	-19	-14
48	-10	-17	-23	-25	-18	-13
54	-11	-18	-24	-23	-17	-13
60	-12	-19	-25	-22	-16	-12

**Resistance to Air Flow (SPS)
Inches of Water**

Silencer Size Fan Dia.	0.1"SP CFM	0.2"SP CFM	0.3"SP CFM	0.4"SP CFM	0.5"SP CFM	0.6"SP CFM	0.7"SP CFM	0.8"SP CFM
12	1,400	1,900	2,400	2,700	3,100	3,500	3,700	4,000
16	2,100	3,000	3,700	4,300	4,800	5,200	5,600	6,000
20	3,500	4,900	6,000	6,900	7,500	8,400	9,000	9,700
24	5,500	7,900	9,500	12,000	13,000	15,000	16,000	17,500
27	7,000	9,500	13,000	14,000	16,000	18,000	19,000	20,000
30	8,500	13,000	15,500	18,000	19,500	21,000	22,500	25,000
36	15,300	20,700	25,150	28,750	31,950	34,100	37,350	39,600
42	17,500	23,000	30,000	34,500	39,500	42,500	48,000	50,000
48	22,000	31,000	38,000	44,000	49,500	54,000	59,000	61,500
54	28,000	40,000	50,000	58,500	65,000	71,000	78,000	83,500
60	34,000	49,000	59,000	69,000	78,000	85,000	90,000	98,000

Special features of Strobic Air Duct Silencers:

Flanged on both ends for bolting directly to any manufacturing fan or duct system

UL tested acoustic material has flame spread under 25 and smoke development under 50

Pod or splinter inserts can be added for increased attenuation



Metal parts are available with galvanized, epoxy and phenolic coatings

Constructed of heavy gauge steel with smooth interior surfaces to minimize air resistance

Standard sizes from 12" to 60" diameter in round, square or rectangular configuration

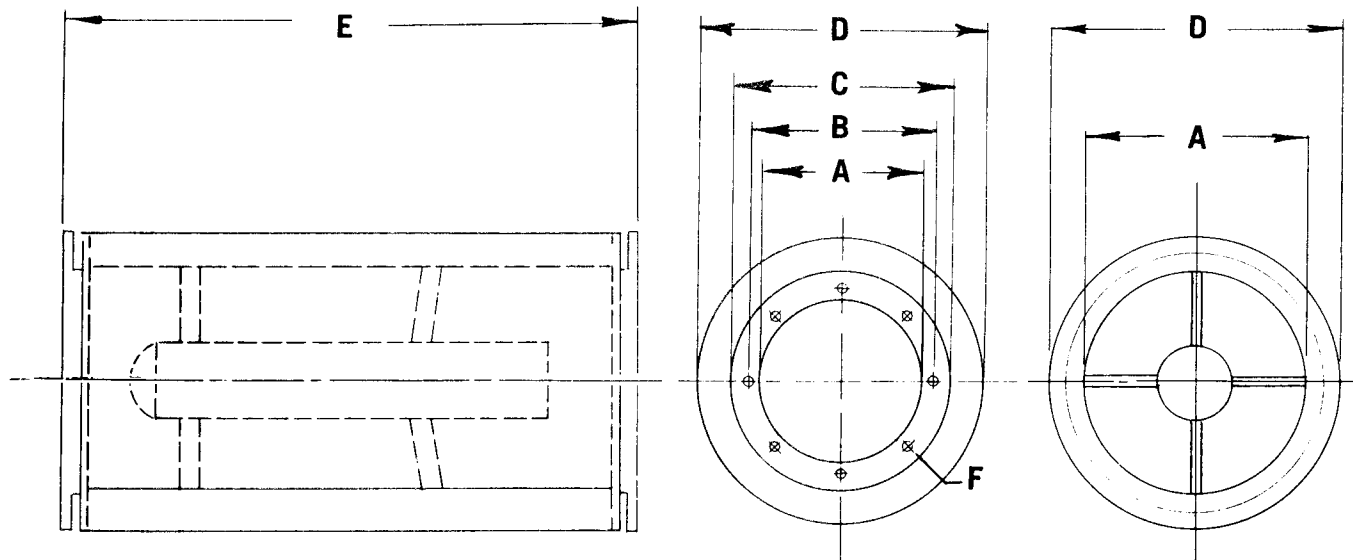
Duct Silencers

reduce airborne noise created by fans

Submittal Data:
 Customer: _____
 Architect/Engineer: _____
 Project: _____

Drawing No.: _____ Date: _____
 Submitted by: _____
 Approved by: _____
 Date: _____

Typical Dimensions



FAN SIZE	DIMENSIONS					
	A	B	C	D	E	F
12	12.50	14.06	15.19	16.50	20.50	8.31
16	16.50	18.06	19.19	20.50	26.50	8.31
20	20.50	22.31	23.69	24.50	33.00	8.44
24	24.50	26.31	27.75	28.50	39.00	8.44
27	27.50	29.31	30.75	31.50	44.00	8.44
30	30.50	32.31	33.75	34.50	48.00	12.44
36	36.75	39.00	40.50	40.75	57.50	12.44
42	42.75	45.00	46.50	46.75	66.50	12.44
54	54.87	57.19	58.69	58.87	111.25	16.56
60	61.00	63.31	64.81	65.00	125.50	16.56

FAN SIZE	WEIGHTS IN POUNDS	
	Without Pod	With Pod
12	40	—
16	75	—
20	100	120
24	135	170
27	170	210
30	220	265
36	320	380
42	440	525
48	750	910
54	960	1070
60	1140	1420

NOTE: Due to the introduction of improvements from time to time, the company reserves the right to supply products which may differ slightly from those illustrated and described in this publication.



FANS, SILENCERS AND SYSTEMS

160 Cassell Road, P.O. Box 144, Harleysville, PA 19438
 1-800-SAC-FANS, (215) 723-4700, FAX: (215) 723-7401
 E-mail: tristack@strobicair.com, Web site: www.strobicair.com



Represented by: