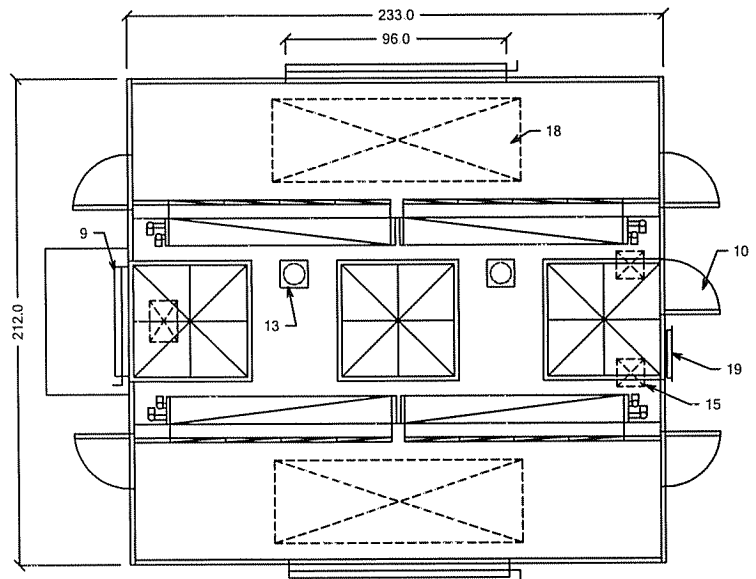


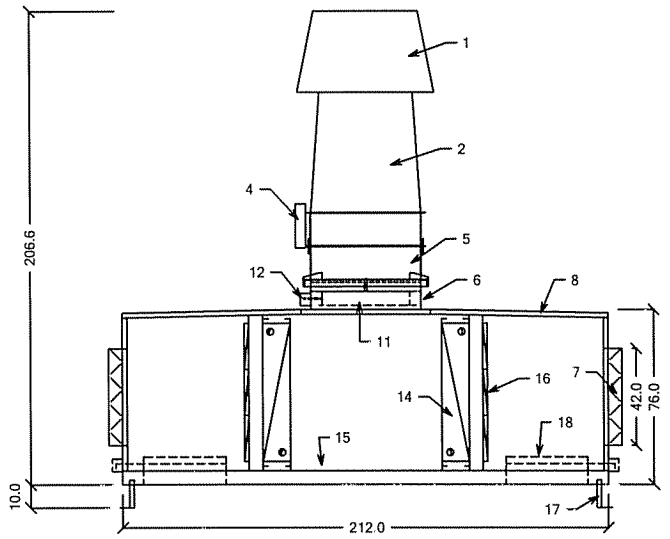
REVISION			
LTR.	DESCRIPTION	DRAWN	CHECKED

NOTES:
 1. COIL CFM: 80,000
 2. ESTIMATED PLENUM WEIGHT: 22,000 LBS
 3. ROOF CURB SIZE (O.D.): 227"L X 206"W X 12"H
 4. ESTIMATED INTERNAL SP: 2.25" WC
 5. FLOOR OPENING SIZE: 108"L X 36"W

- DRAWING LEGEND:**
1. ENTRAINMENT WINDBAND
 2. TRI-STACK™ NOZZLE
 3. MOTOR (NOT SHOWN)
 4. DISCONNECT SWITCH
 5. FAN HOUSING
 6. FAN CURB W/ OPTIONAL VORTEX BREAKER
 7. PLENUM ISOLATION DAMPER
 8. DOUBLE-WALLED MIXING PLENUM
 9. BYPASS DAMPER WITH RAINHOOD
 10. ACCESS DOOR (TYPICAL)
 11. FAN ISOLATION DAMPER
 12. FAN ISOLATION DAMPER ACTUATOR
 13. JIB CRANE SOCKET (OPTIONAL)
 14. HEAT RECOVERY COIL
 15. PIPE CHASE
 16. 30% PREFILTERS
 17. ROOF CURB (OPTIONAL)
 18. FLOOR OPENING (OPTIONAL)
 19. REMOVABLE PANEL



PLAN VIEW



ELEVATION

NOTE: BECAUSE WE ARE CONSTANTLY STRIVING TO IMPROVE OUR PRODUCTS, WE RESERVE THE RIGHT TO PROVIDE VERSIONS OF THESE PRODUCTS WITH SLIGHT VARIATIONS FROM THOSE ILLUSTRATED HERE

©THIS DRAWING AND DESIGN IS THE EXCLUSIVE PROPERTY OF STROBIC AIR® CORP. AND IS COPYRIGHT. IT MUST NOT BE COPIED, OR USED FOR PRODUCTION, OR COMMUNICATED TO A THIRD PARTY, WITHOUT THE EXPRESSED WRITTEN PERMISSION OF THIS COMPANY.

UNLESS OTHERWISE SPECIFIED DIMENSIONS ARE IN INCHES TOLERANCES ARE .XX ± .00" ± .1" .XXX ± .00"	CONTRACT NO.		HEAT RECOVERY PLENUM MODEL # TS-3 80 HRU 1X3 2S 4-60X96		
	APPROVALS	DATE	STROBIC AIR® CORPORATION A SUBSIDIARY OF MET-PRO CORPORATION 160 CASSELL ROAD, BOX 144 HARLEYSVILLE, PA 19438		
	DRAWN E.W.H.	01/16/04			
MATERIAL	CHECKED	APR'VD	SIZE	CODE IDENT. NO.	DRAWING NO.
FINISH	U.S. PATENT NO. 6,431,974 U.S. PATENT NO. 6,112,850 U.S. PATENT NO. 4,806,706 CANADIAN PATENT NO. 1,277,171		B		TS-3 80 HRU 1X3 2S 4-60X96 R0
			SCALE: N.T.S.	SHEET 1 OF 1	