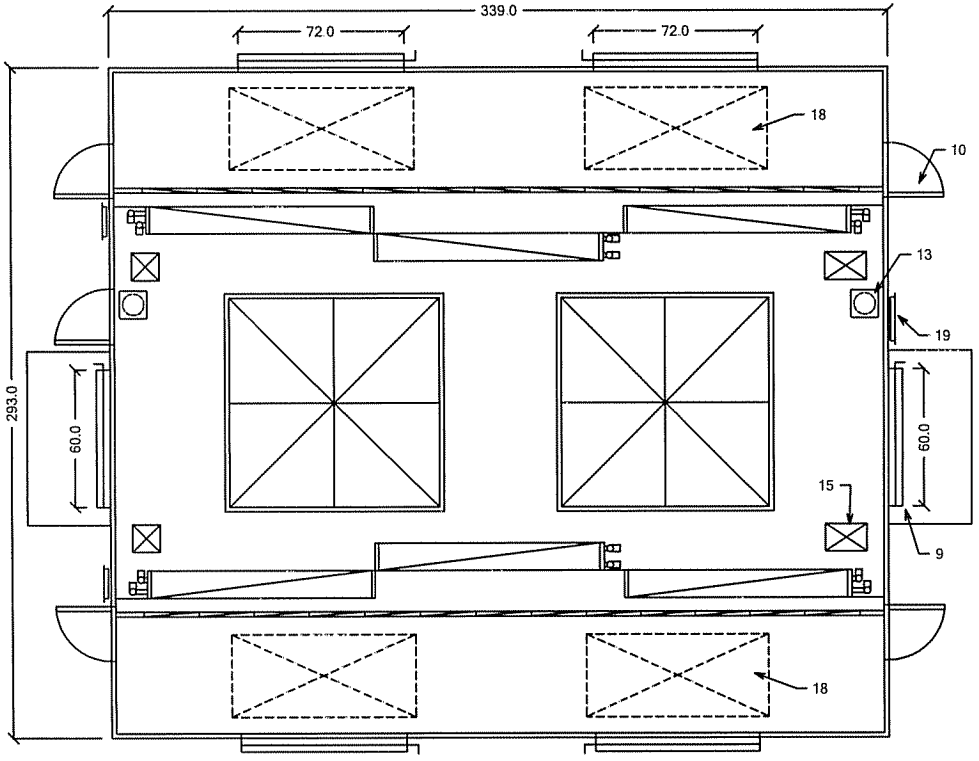


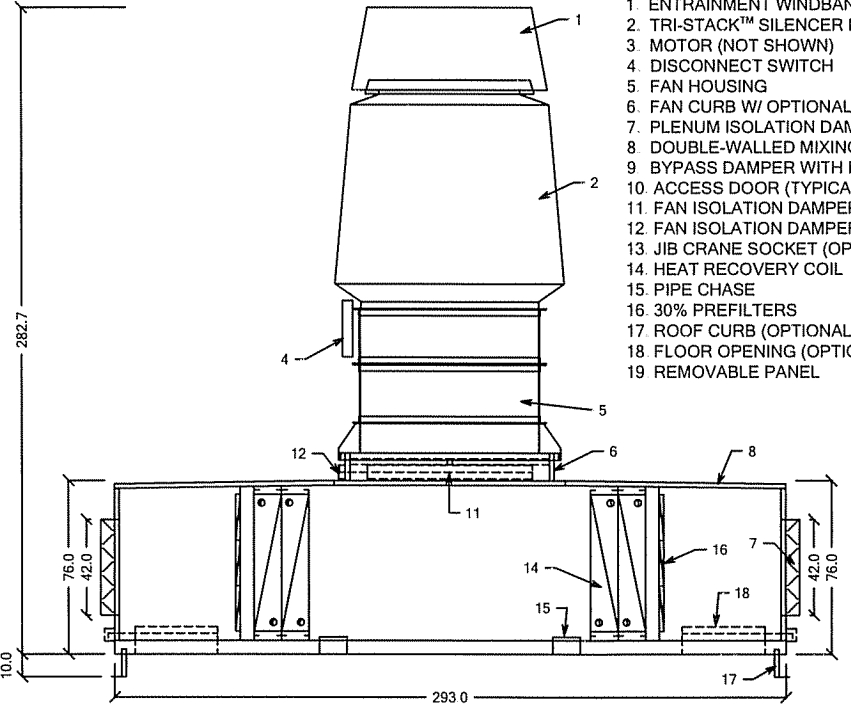
**NOTES:**  
 1. COIL CFM: 120,000  
 2. ESTIMATED PLENUM WEIGHT: 38,000 LBS.  
 3. ROOF CURB SIZE (O.D.): 333"L X 287"W X 12"H  
 4. ESTIMATED INTERNAL SP: 2 25" WC  
 5. FLOOR OPENING SIZE: 80"L X 36"W

REVISION			
LTR.	DESCRIPTION	DRAWN	CHECKED



PLAN VIEW

© THIS DRAWING AND DESIGN IS THE EXCLUSIVE PROPERTY OF STROBIC AIR® CORP. AND IS COPYRIGHT. IT MUST NOT BE COPIED, OR USED FOR PRODUCTION, OR COMMUNICATED TO A THIRD PARTY, WITHOUT THE EXPRESSED WRITTEN PERMISSION OF THIS COMPANY.



- DRAWING LEGEND:**
1. ENTRAINMENT WINDBAND
  2. TRI-STACK™ SILENCER NOZZLE (OPTIONAL)
  3. MOTOR (NOT SHOWN)
  4. DISCONNECT SWITCH
  5. FAN HOUSING
  6. FAN CURB W/ OPTIONAL VORTEX BREAKER
  7. PLENUM ISOLATION DAMPER
  8. DOUBLE-WALLED MIXING PLENUM
  9. BYPASS DAMPER WITH RAINHOOD
  10. ACCESS DOOR (TYPICAL)
  11. FAN ISOLATION DAMPER
  12. FAN ISOLATION DAMPER ACTUATOR
  13. JIB CRANE SOCKET (OPTIONAL)
  14. HEAT RECOVERY COIL
  15. PIPE CHASE
  16. 30% PREFILTERS
  17. ROOF CURB (OPTIONAL)
  18. FLOOR OPENING (OPTIONAL)
  19. REMOVABLE PANEL

**ELEVATION**

NOTE: BECAUSE WE ARE CONSTANTLY STRIVING TO IMPROVE OUR PRODUCTS, WE RESERVE THE RIGHT TO PROVIDE VERSIONS OF THESE PRODUCTS WITH SLIGHT VARIATIONS FROM THOSE ILLUSTRATED HERE.

UNLESS OTHERWISE SPECIFIED DIMENSIONS ARE IN INCHES TOLERANCES ARE = .XX ± 0.06" ± 1" = .XXX"	CONTRACT NO.		HEAT RECOVERY PLENUM MODEL # TS-5 120 HRU 1X2 2S 6-60X96		
	APPROVALS	DATE	STROBIC AIR® CORPORATION A SUBSIDIARY OF MET-PRO CORPORATION 160 CASSELL ROAD, BOX 144 HARLEYSVILLE, PA 19438		
	DRAWN E.W.H.	01/16/04			
	CHECKED				
MATERIAL	APRVD		SIZE	CODE IDENT. NO	DRAWING NO.
FINISH	U.S. PATENT NO. 6,431,974 U.S. PATENT NO. 6,112,850 U.S. PATENT NO. 4,806,706 CANADIAN PATENT NO. 1,277,171		B		TS-5 120 HRU 1X2 2S 6-60X96 R0
			SCALE: N.T.S.	SHEET 1 OF 1	